



+49 (0)2264-20098-0

+49 (0)170-3263042

maschinenbau@eep-maschinenbau.de

Washing/Drying Machines

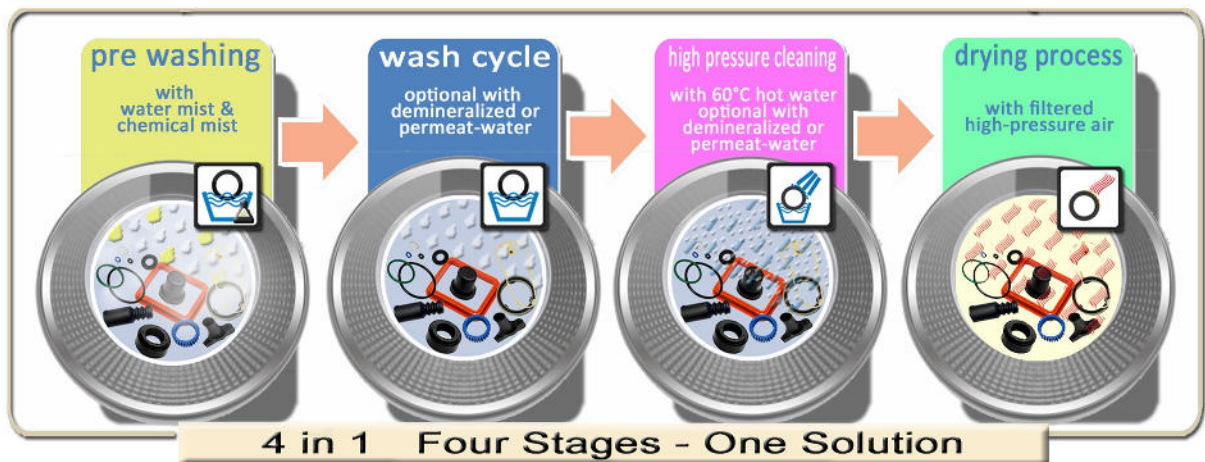




- Deflashing machines for elastomers, plastics and zinc die-casts
- High performance washing/drying machines for technical and medical rubber parts
- Automatic inspection systems for rubber, plastic-, ceramic and metal parts
- Surface treatments for elastomers

OUR WASHING CONCEPT

The requirements of cleanliness and hygiene to medical and technical rubber parts are continually increasing. The customers desire cleanliness of parts, that could not be fulfilled by the limit values of the water regulation at your location. With these claims, we, - EEP-Maschinenbau -, have developed a completely new washing concept for the industry:



This washing technique is designed in accordance to the practical demands and provides absolute clean washing results with high throughput at short washing and drying process time - with certainty of results ensured! **Depending on water quality/cleanliness requirements, a special treatment with demineralized or permeat water is optional possible with an extra module (subsequent upgrade possible).**

THE WASHINGPROCESS

The parts to be washed are loaded into the exchangeable basket/fixed drum. In the first cycle, a water-chemistry mixture is sprayed to moisten the parts. By rubbing against each other during the rins, dirt is detached. In the next cycle, washing with high pressure cleaning at 150 Bar at max 60°C takes place. After that, the washed parts are dried with filtered room air without any need of extra heating, the air heating takes place by friction warming. If required, or if necessary due to poor water quality, the whole washing process can be executed with demineralized or permeat water (optional extra module).



- Deflashing machines for elastomers, plastics and zinc die-casts
- High performance washing/drying machines for technical and medical rubber parts
- Automatic inspection systems for rubber, plastic-, ceramic and metal parts
- Surface treatments for elastomers

W20 High Performance Washing/Drying-System

Automatic small sized washing machine for the effective cleaning of rubber parts suitable for molded articles from 1 to 150 mm (depending on drum perforation) – no washing net required.

This machine offers high efficiency cleaning of industrial and medical rubber parts. With its small footprint, it can be integrated into the production line easily and therefore avoids temporary storage or transports and corresponding time loss and costs. The **W20** is, like any of our machines, conceptualized for high efficient use with economic efficiency. The comfortable touchscreen panel allows a fast and easy control of all parameters as well as administration of your washing recipes. Depending on water quality/cleanliness requirements, an additional module for treatment with demineralized or permeate-water is available optionally. By special request, siliconisation of rubber parts or coating with other glide agents is also possible.

On customer needs, the **W20** is available with fixed washing drum or exchangeable basket system (perforation of the drum 1 – 15 mm by choice)

Technical Data

Dimensions (D/W/H):	1660 x 1250 x 1800 mm
Weight:	320kg
Drum Volume:	20 liters
Material:	Stainless Steel
Drum Speed:	14 RPM
Working Pressure:	150 bar – 15 liters per minute
Electric Capacity:	5,5kW
Instantaneous water heater 60°C:	38kW
Drum Diameter:	300mm
Drum depth:	400mm
Moulded Parts:	dimension range depending on drum perforation 1 – 150 mm
Control:	Siemens Logo with touchpanel
Optional with exchangeable basket system with perforation 1 - 15 mm by choice	





- ⌚ Deflashing machines for elastomers, plastics and zinc die-casts
- ⌚ High performance washing/drying machines for technical and medical rubber parts
- ⌚ Automatic inspection systems for rubber, plastic-, ceramic and metal parts
- ⌚ Surface treatments for elastomers



Highlights:

- ➡ ■ fast processing times (10 –35 minutes)
at 20 l drum volume
- ➡ ■ no washing net required
- ➡ ■ washing cold/hot (max. 60°C)
– with or without chemistry – with 150 Bar
- ➡ ■ no pollution deposit at the edge of the end of the drum,
therefore no re-contamination of the washed products possible
- ➡ ■ washing with demineralized or permeate water
module optional possible
- ➡ ■ siliconisation or similar coating possible by special request
- ➡ ■ drying with filtered high pressure air
- ➡ ■ clear and comfortable touch panel operation
- ➡ ■ recipe memory and easy loading of your individual setting
- ➡ ■ all motors located outside the wet area
- ➡ ■ working level (peak) below 80 dB(A)
- ➡ ■ optional available with exchangeable basket system

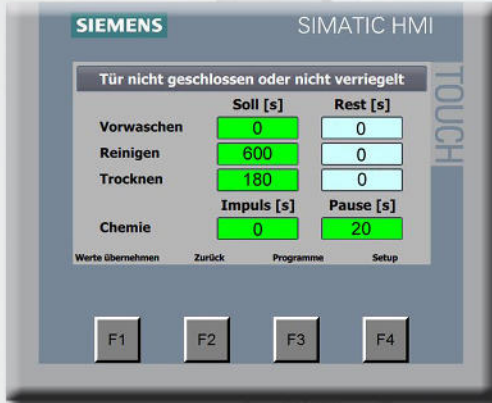


W20

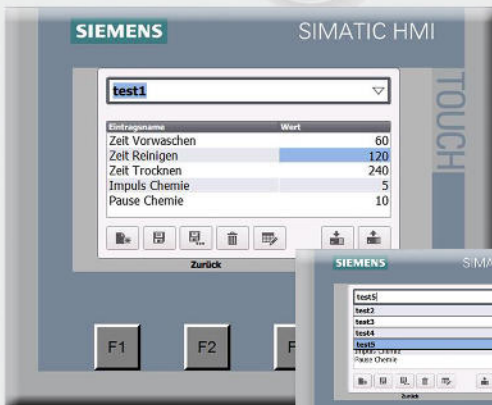
- Deflashing machines for elastomers, plastics and zinc die-casts
- High performance washing/drying machines for technical and medical rubber parts
- Automatic inspection systems for rubber, plastic-, ceramic and metal parts
- Surface treatments for elastomers

Comfortable Touchpanel Operation

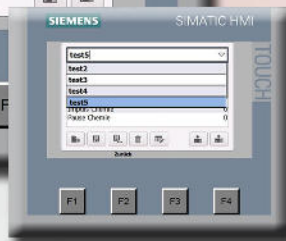
The clearly laid out touchpanel allows direct access to all important parameters to control the machine.



In the user main menu, the operator has all important setting values at one glance. Via comfortable touchpanel, parameters like *pre-wash time, high pressure cleaning time, drying time and impulse chemistry* can be adjusted. With F1, new set parameter values can be confirmed. With the button F3 you can change to the program mode (recipe administration). Your individual settings can be saved and managed here. By pressing F4, you are directed to the setup mode.



All your personal parameter settings can be administered in the program mode. Here you can create and name recipes (eg article name) and save, load or delete recipes by touchclick. Therefore all related parameter data for each different kind of article is recallable fast and easy and ensures a trouble-free treatment process.

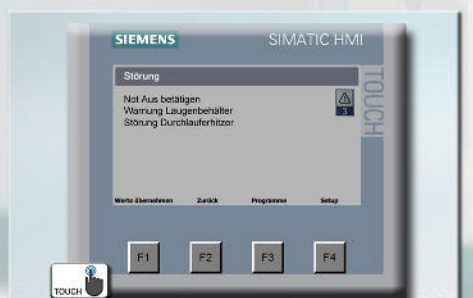
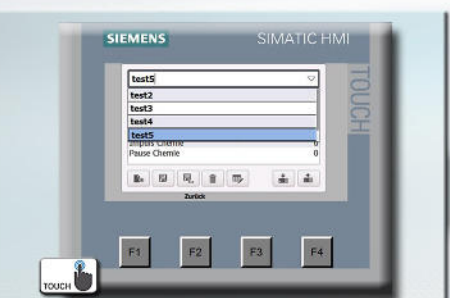
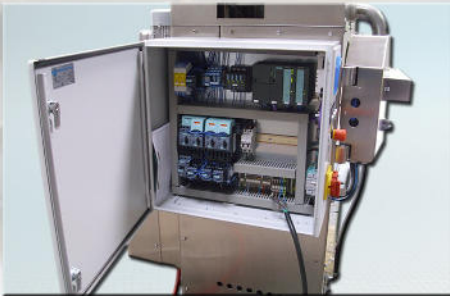
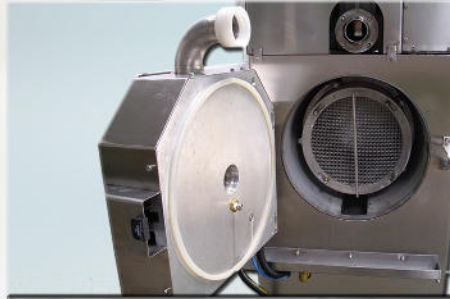


In setup mode, you can adjust brightness of the touchpanel, make calibrations or activate the cleaning screen set (deactivates all buttons temporarily for the cleaning procedure of the touchpanel)



- Deflashing machines for elastomers, plastics and zinc die-casts
- High performance washing/drying machines for technical and medical rubber parts
- Automatic inspection systems for rubber, plastic-, ceramic and metal parts
- Surface treatments for elastomers

product gallery





W20

- Deflashing machines for elastomers, plastics and zinc die-casts
- High performance washing/drying machines for technical and medical rubber parts
- Automatic inspection systems for rubber, plastic-, ceramic and metal parts
- Surface treatments for elastomers

EFP
Maschinenbau &
Elastomerrecycling
GmbH



total dimensions

1800 mm

1900 mm

2100 mm

EFP
Maschinenbau &
Elastomerrecycling
GmbH



EFP Maschinenbau & Elastomerrecycling
Erwin Plömacher GmbH

Höher Birken 6a DE- 51709 Marienheide
Tel + 49-2264-20098-0 Fax + 49-2264-20098-20
Email: maschinenbau@eep-maschinenbau.de