



+49 (0)2264-20098-0

+49 (0)170-3263042

maschinenbau@eep-maschinenbau.de

Washing/Drying Machines



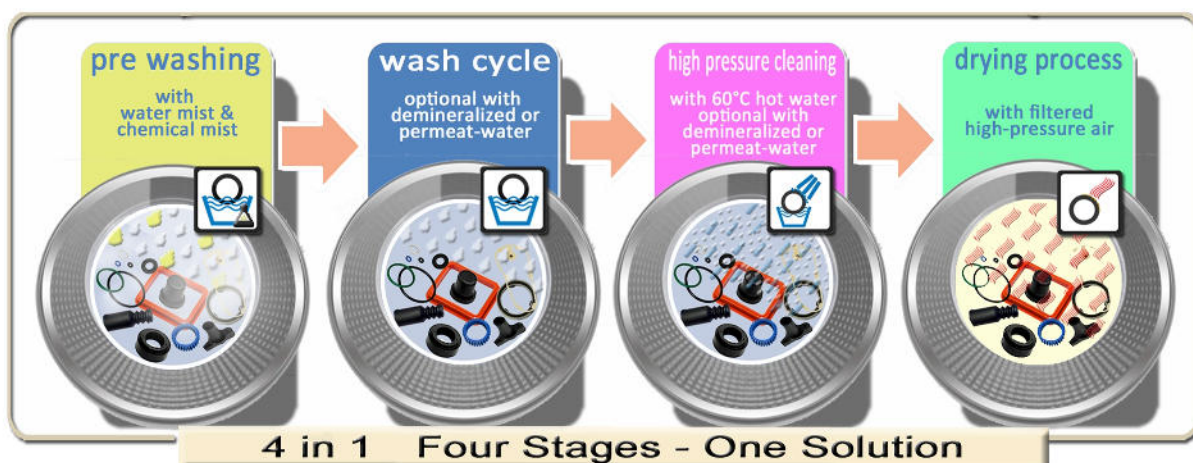


W90

- Deflashing machines for elastomers, plastics and zinc die-casts
- High performance washing/drying machines for technical and medical rubber parts
- Automatic inspection systems for rubber, plastic-, ceramic and metal parts
- Surface treatments for elastomers

OUR WASHING CONCEPT

The requirements of cleanliness and hygiene to medical and technical rubber parts are continually increasing. The customers desire cleanliness of parts, that could not be fulfilled by the limit values of the water regulation at your location. With these claims, we, - EEP-Maschinenbau -, have developed a completely new washing concept for the industry:



This washing technique is designed in accordance to the practical demands and provides absolute clean washing results with high throughput at short washing and drying process time - with certainty of results ensured! **Depending on water quality/cleanliness requirements, a special treatment with demineralized or permeate water is optional possible with an extra module (subsequent upgrade possible).**

THE WASHINGPROCESS

The parts to be washed are loaded into the exchangeable basket/fixed drum. In the first cycle, a water-chemistry mixture is sprayed to moisten the parts. By rubbing against each other during the rins, dirt is detached. In the next cycle, washing with high pressure cleaning at 150 Bar at max 60°C takes place. After that, the washed parts are dried with filtered room air without any need of extra heating, the air heating takes place by friction warming. If required, or if necessary due to poor water quality, the whole washing process can be executed with demineralized or permeate water (optional extra module).

- Deflashing machines for elastomers, plastics and zinc die-casts
- High performance washing/drying machines for technical and medical rubber parts
- Automatic inspection systems for rubber, plastic-, ceramic and metal parts
- Surface treatments for elastomers



W90 High Performance Washing/Drying-System

Automatic high performance washing machine for the effective cleaning of rubber parts suitable for molded articles from 3 to 500 mm (depending on drum perforation)
– no washing net required.

This machine offers high efficiency cleaning of industrial and medical rubber parts and is with its 90 litre drum volume designed for big demands. The **W90** is, like any of our machines, conceptualized for high efficient use with economic efficiency. The comfortable touchscreen panel allows a fast and easy control of all parameters as well as administration of your washing recipes. Depending on water quality/cleanliness requirements, an additional module for treatment with demineralized or permeate-water is available optionally. By special request, siliconisation of rubber parts or coating with other glide agents is also possible.

The **W90** is available with a fixed washing drum (perforation of the drum 2 – 50 mm by choice)

Technical Data

Dimensions (D/W/H):	2000 x 1700 x 2000 mm
Weight:	540 kg
Drum volume:	90 liters
Material:	Stainless Steel
Drum speed:	11 RPM
Working pressure:	150 bar – 15 liters per minute
Electric capacity:	11 kW
Instantaneous water heater 60°C:	38 kW
Drum diameter:	900 mm
Drum depth:	1000 mm
Moulded parts:	dimension range depending on drum perforation 3 – 500 mm
Control:	Siemens Logo with touchpanel





Highlights:

- ➡ ■ fast processing times (10 – 35 minutes)
at 90 l drum volume
- ➡ ■ no washing net required
- ➡ ■ washing cold/hot (max. 60°C)
– with or without chemistry – with 150 Bar
- ➡ ■ no pollution deposit at the edge of the end of the drum,
therefore no re-contamination of the washed products possible
- ➡ ■ washing with demineralized or permeate water
module optional possible (retrospective installation possible)
- ➡ ■ siliconisation or similar coating possible by special request
- ➡ ■ drying with filtered high pressure air
- ➡ ■ clear and comfortable touch panel operation
- ➡ ■ recipe memory and easy loading of your individual setting
- ➡ ■ all motors located outside the wet area
- ➡ ■ working level (peak) below 80 dB(A)

- Deflashing machines for elastomers, plastics and zinc die-casts
- High performance washing/drying machines for technical and medical rubber parts
- Automatic inspection systems for rubber, plastic-, ceramic and metal parts
- Surface treatments for elastomers



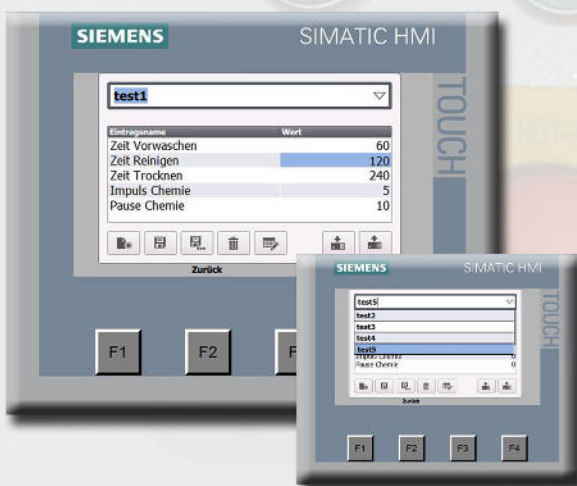
W90

Comfortable Touchpanel Operation

The clearly laid out touchpanel allows direct access to all important parameters to control the machine.



In the user main menu, the operator has all important setting values at one glance. Via comfortable touchpanel, parameters like *pre-wash time*, *high pressure cleaning time*, *drying time* and *impulse chemistry* can be adjusted. With F1, new set parameter values can be confirmed. With the button F3 you can change to the program mode (recipe administration). Your individual settings can be saved and managed here. By pressing F4, you are directed to the setup mode.



All your personal parameter settings can be administered in the program mode. Here you can create and name recipes (eg article name) and save, load or delete recipes by touchclick. Therefore all related parameter data for each different kind of article is recallable fast and easy and ensures a trouble-free treatment process.

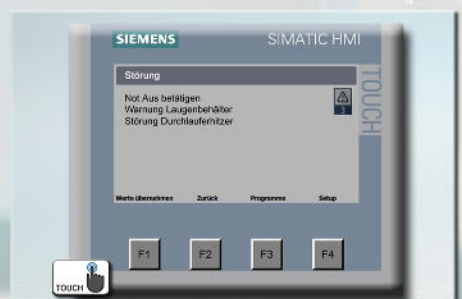
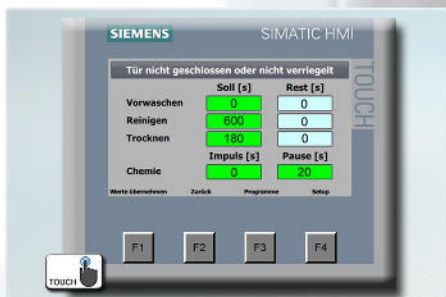
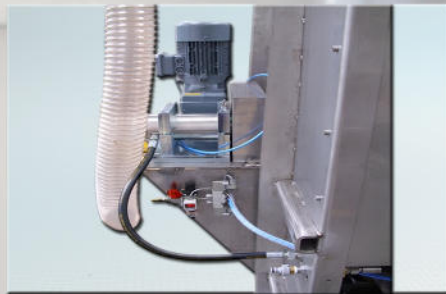
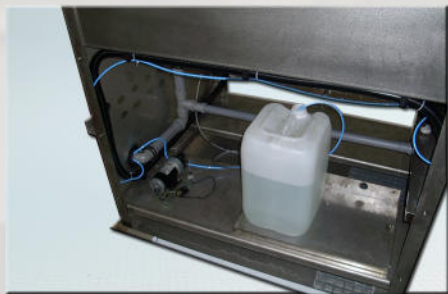


In setup mode, you can adjust brightness of the touchpanel, make calibrations or activate the cleaning screen set (deactivates all buttons temporarily for the cleaning procedure of the touchpanel)



- Deflashing machines for elastomers, plastics and zinc die-casts
- High performance washing/drying machines for technical and medical rubber parts
- Automatic inspection systems for rubber, plastic-, ceramic and metal parts
- Surface treatments for elastomers

product gallery





W90

- Deflashing machines for elastomers, plastics and zinc die-casts
- High performance washing/drying machines for technical and medical rubber parts
- Automatic inspection systems for rubber, plastic-, ceramic and metal parts
- Surface treatments for elastomers

EEP
Maschinenbau &
Elastomerrecycling
GmbH



total dimensions



EEP
Maschinenbau &
Elastomerrecycling
GmbH



EEP Maschinenbau & Elastomerrecycling
Erwin Plömacher GmbH

Höher Birken 6a DE- 51709 Marienheide
Tel + 49-2264-20098-0 Fax + 49-2264-20098-20
Email: maschinenbau@eep-maschinenbau.de