



[www.tuv.com](http://www.tuv.com)  
ID 9108611555

+49 (0)2264-20098-0

+49 (0)170-3263042

[maschinenbau@eep-maschinenbau.de](mailto:maschinenbau@eep-maschinenbau.de)

Surface Treatment



- Deflashing machines for elastomers, plastics and zinc die-casts
- High performance washing/drying machines for technical and medical rubber parts
- Automatic inspection systems for rubber, plastic-, ceramic and metal parts
- Surface treatments for elastomers



## A20 Abrasive System For Surface Treatment Of Small Rubber Parts

The abrasive system A20 allows the treatment of the surface of small rubber parts as well as the finish and removal of finest flashes by means of high pressure water jet together with ceramic abrasive medium.

By flowing and rinsing around the flutes and bores with the ceramic abrasive medium of 0.02 mm (sizes up to 0.6 mm) the result of the surface finishing becomes excellent.

It is possible to treat rubber parts well defined in the nano range and polish parts (e.g. with shiny surface/film-coated) to get better results for a visual inspection. After abrasive treatment, a meaningful and stable inspection result is ensured again.



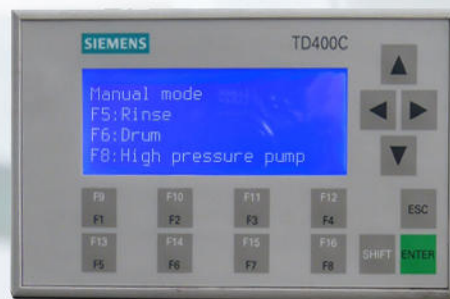
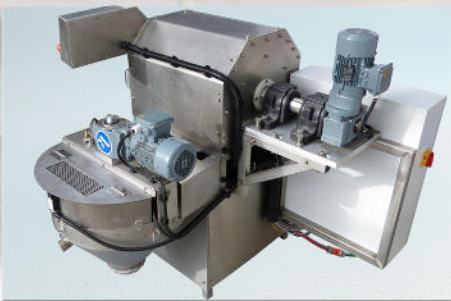
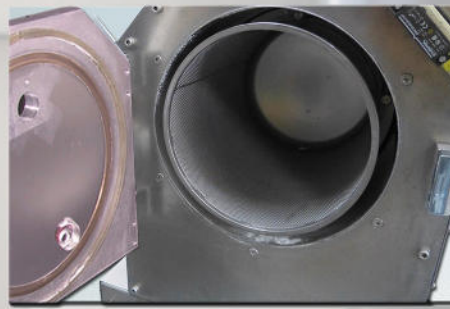
### Technical data

Dimensions :	1450 x 1400 x 1400 mm
Capacity:	max 20 l
Weight:	430 kg
Material:	Stainless Steel
Working pressure:	150 bar - 11 l/min
Connected load:	6 kW
SPS-distribution S7 with operating patchdesk	



- ⊖ Deflashing machines for elastomers, plastics and zinc die-casts
- ⊖ High performance washing/drying machines for technical and medical rubber parts
- ⊖ Automatic inspection systems for rubber, plastic-, ceramic and metal parts
- ⊖ Surface treatments for elastomers

# product gallery





- ⌚ Deflashing machines for elastomers, plastics and zinc die-casts
- ⌚ High performance washing/drying machines for technical and medical rubber parts
- ⌚ Automatic inspection systems for rubber, plastic-, ceramic and metal parts
- ⌚ Surface treatments for elastomers

total dimensions

1400 mm

1800 mm

1850 mm